

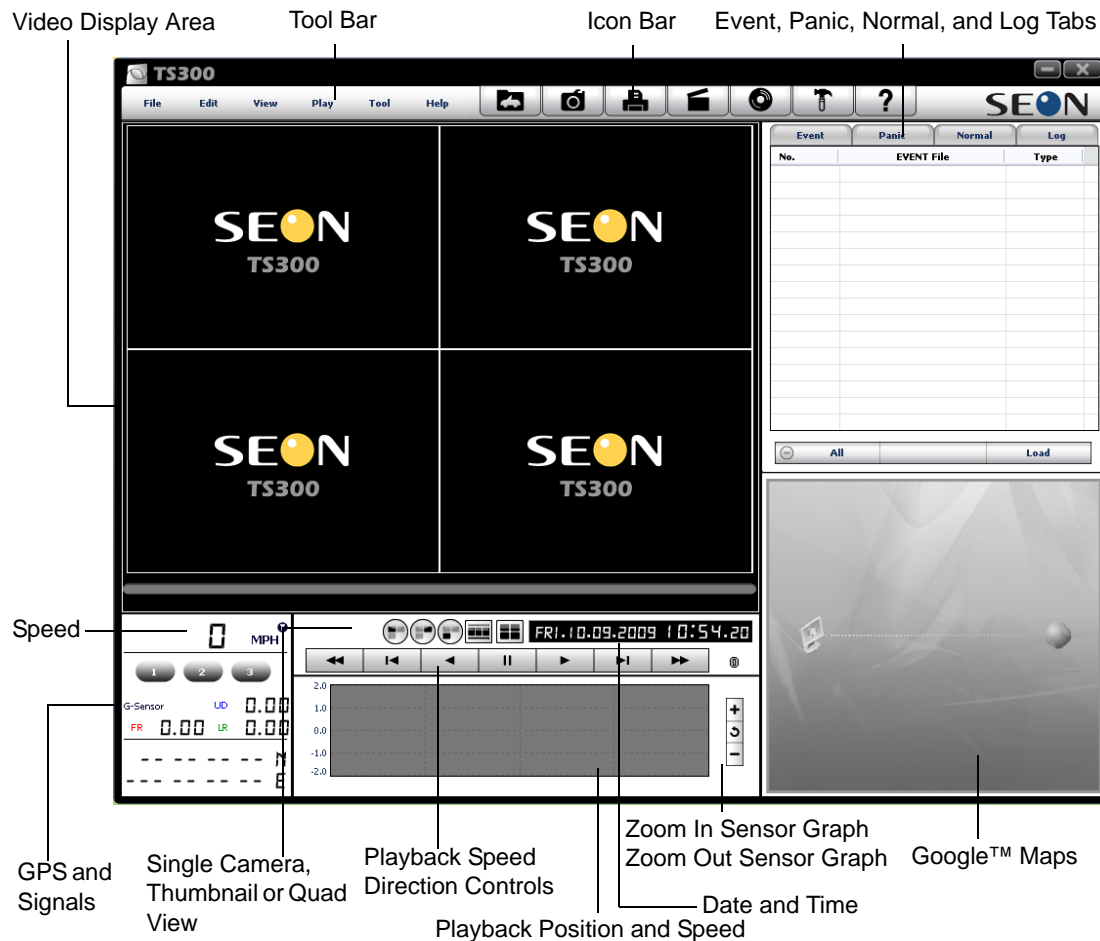
PC Viewer TS300 Player Software Quick Start Guide

Use the PC Viewer TS300 Player software to playback and archive video recorded on the TS300 in-car video system.

- Search for video files from the event, panic, normal, or log list.
- Create a playlist of video clips for easy video playback.
- Archive video as an AVI file.
- Save individual image as JPEG.
- Backup files to the desired folder on your computer.
- Print reports.
- View the location, date and time of the GPS-enabled vehicle using Google™ Maps.

Using the Player Software

To install the Player software, run the application.



File Types

- Event list records door, meter, auxiliary, and G-Sensor information.
- Panic list records panic button information from the remote control.
- Normal list is continuous recording if the DVR has been configured for it.
- Log list records longitude, latitude, G-Sensor, speed (associated video when available).

Creating a Playlist and Playing Back Video

Important: The recorder supports a Power-Off Delay ranging from 0 to 90 minutes. Depending on the setting of this delay (controlled by the rotary switch inside the recorder), you may need to wait after turning ignition OFF before the lights on the remote control go out. If you do not want to wait this period of time, you will need to disconnect the power.

Even if the ignition is turned off, the recorder will remain powered on as long as the front dome light is illuminated. The dome light must be switched off to initiate the power delay-off.

- 1 Remove the SD Media Card from the recorder, and insert into the SD Media Card Reader.
- 2 Insert the SD Media Card Reader into a USB port on your computer. The red light on the Reader illuminates. Make sure the PC Viewer TS300 software is installed.
- 3 Double click on the PC Viewer TS300 icon on your desktop.
- 4 On the File menu, click Select Data Folder or click Open icon.
- 5 In the Browse for Folder dialog box, select the SD card drive, DRIVEREC3 (G), in this case, and click **OK**.

After the contents of the SD Media Card are read, the Event, Panic, and Log lists display the video clips.

- 6 In Event list, for example, select an event or events. Clicking All selects all the events or clears all events.
- 7 Click **Load** to create a playlist of the video clips.
The video appears in the video display. Change the view by clicking on the View menu or the icons for single camera, thumbnail or quad view.
- 8 Click the control buttons to play, pause, and change the playback speed and direction.
In the graph area of the Player software window, the red, blue, and green lines indicate G-Sensor data. On the time line, the white box indicates the times of the current image being displayed. Events are indicated by the black vertical dashed lines. Click and drag the white line to move the playback position.

Exporting Video to AVI

- 1 On the Tool menu, select Save AVI or click the Save AVI icon, the Save as AVI dialog box appears.
- 2 Name the AVI file and select the desired settings.
- 3 Click **OK** and save to a folder on the computer.

Saving a File to JPEG

- 1 On the Tool menu, select Save JPEG or click the Save images as JPEG and the Save images as JPEG dialog box appears.
- 2 Select the desired settings.
- 3 Click **OK** and save to a folder on the computer.

Printing a Report

- 1 On the File menu, select Print or click on the Print icon.
- 2 Select the desired settings in the Print Images dialog box.
- 3 Click **OK**.
- 4 Enter a print title and comments, if desired.
- 5 Click **OK**.

Mapping Feature with Google Maps

- The blue circles indicate the GPS fixes recorded before and after an event. These are only displayed when viewing in Event or Panic modes, not Log.
- A camera icon indicates there are images.

Safely Removing SD Media Card Reader



CAUTION

Do not remove the SD Media Card without safely ejecting from your computer.

- 1 To safely remove the SD Media Card Reader from your computer, click on the Tool menu and select Eject SD Card.

The PC Viewer eject SD card message appears.



- 2 Click **OK**.

The red light on the SD Media Card Reader turns off and can be removed.

Related Documents

- *TS300 In-Vehicle Camera System Quick Hardware Installation Guide 700-0088 R001*
- *Oldee Cam TS300 Software Quick Configuration Guide 700-0089 R001*

Customer Service Contact Information

Contact Oldee Taxi Instruments Monday to Friday 8 AM to 6 PM and Saturday 9 AM to 3 PM.

Telephone	718-482-6533
Fax	718-482-7144
Email	info@oldeetaxiinstruments.com

©December 2009 Seon Design Inc. All rights reserved. www.seon.com